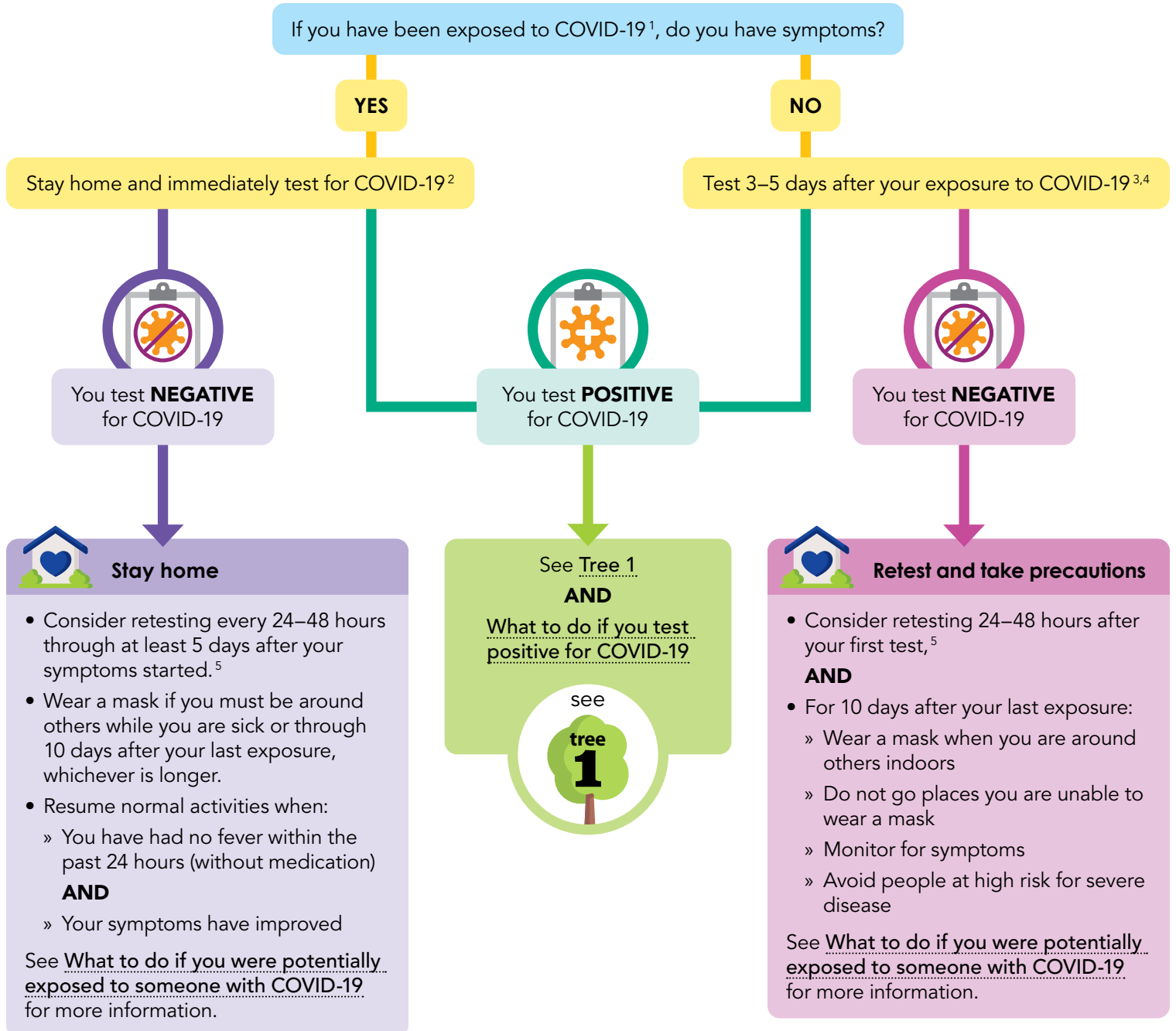


What to do if you have been exposed to COVID-19



This decision tree is for the general public and non-health care settings, such as schools and child cares.



¹ Exposed to COVID-19: someone who was within 6 feet of a COVID-19 case for more than 15 minutes within a 24-hour period during the case's contagious period. The definition of a close contact may vary in some situations.

² If you tested positive in the past 90 days and have symptoms of COVID-19, use an antigen test (not a PCR test).

³ If you have tested positive in the past 30 days and recovered and do not have symptoms, testing again for COVID-19 is not recommended. You should, however, wear a well-fitting and high-quality mask around others, not go places you cannot wear a mask, monitor for symptoms, and avoid people at high risk for severe disease for 10 days after your last exposure.

⁴ If you tested positive in the past 30–90 days, use an antigen test (not a PCR test).

⁵ See [Self-Testing Guidance for the Public](#) for additional information about using repeat testing if you test negative. If you tested negative with a molecular laboratory test (e.g., PCR), you do not need to repeat testing.



DOH 420-456 February 6, 2023

To request this document in another format, call 1-800-525-0127. Deaf or hard of hearing customers, please call 711 (Washington Relay) or email civil.rights@doh.wa.gov.