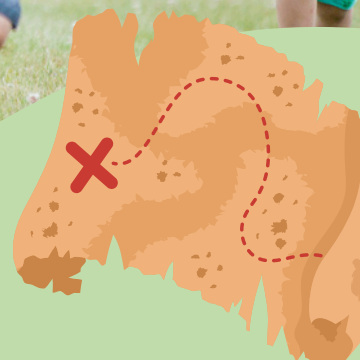


# HAZELWOOD SUMMER CAMP 2025

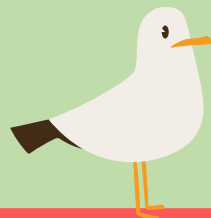


**FOR AGES 2 - 7 YEARS**

**HALF DAY 8:30-1: \$415 PER WEEK**

**FULL DAY 8:30-4: \$490 PER WEEK**

**AFTERCARE AVAILABLE UNTIL 5:30 FOR \$20/DAY**

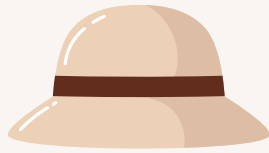


**TO REGISTER,  
SCAN QR CODE OR GO TO  
HAZELWOODSEATTLE.ORG**



# EXPLORE THE CAMPS

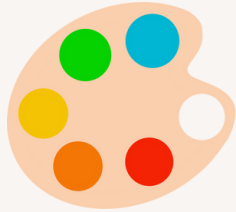
JULY  
7 - 11



## SAFARI CAMP

Grab your binoculars—we're going on a safari! Campers will explore a wild world through jungle adventures, exciting crafts, and a meet-and-greet with real animals!

JULY  
14 - 18



## ART CAMP

Get ready to paint, sculpt, and create! This week is all about exploring different art materials, getting messy, and bringing big imaginations to life.

JULY  
21 - 25



## WILDERNESS CAMP

Let's go camping! Campers will build forts, learn about local wildlife, and practice their outdoor skills through hands-on nature play and storytelling.

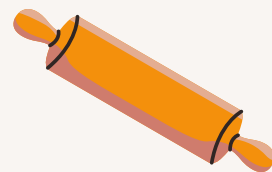
JULY 28 -  
AUGUST 1



## PIRATE CAMP

Ahoy, mateys! Join our crew for a swashbuckling adventure filled with maps, pirate crafts, and a hunt for Cap'n Fauntleroy's treasure!

AUGUST  
4 - 8



## COOKING CAMP

Little chefs will chop, mix, and create their way through a week of delicious fun! Campers will explore new flavors, create tasty treats, and learn new skills.

AUGUST  
11 - 15



## DINO CAMP

Travel back in time to when dinosaurs roamed the Earth! We'll dig for fossils, stomp like T-Rexes, and learn all about these prehistoric giants.

AUGUST  
18 - 22



## SPACE CAMP

Blast off into a week of cosmic fun! Campers will explore planets, design rockets, and imagine life among the stars through hands-on space adventures.

AUGUST  
25 - 29



## MUSIC AND DANCE CAMP

Get ready to move and groove! Campers will explore rhythm, play instruments, and dance their way through a week of joyful movement and music-making.

# GETTING STARTED

1

## SIGN-UP FOR CAMPS!

Complete the sign-up form on our website:  
[hazelwoodseattle.org/summercamp2025](https://hazelwoodseattle.org/summercamp2025)  
You must register each child separately.



2

## CHECK YOUR EMAIL

You will receive a follow-up email conforming the camps within 48 hours. We use ProCare for registration and payments. If you are not previously registered with us in the ProCare system, you will receive an email link to complete registration and set up payment.

3

## PAYMENT

You will be billed separately for each camp.

- Full Day 8:30-4: **\$490 per week**
- Half Day 8:30-1: **\$415 per week**

**Please pay close attention to the due dates on the invoice. You can choose to pay the invoice when received or wait and it will auto charge you on the invoice due date.**

4

## CHANGE OF PLANS?

No problem! You may cancel within 2 weeks of the first day of the camp for a full refund of camp tuition. Just email your request to [jessica@hazelwoodseattle.org](mailto:jessica@hazelwoodseattle.org)

# CAMP INFORMATION

## LOCATION

Camps are held at Hazelwood Preschool located in the UCC Fautleroy Church at 9140 California Ave SW (98136). Classrooms face the parking lot. Camp will also utilize the playground and Fautleroy Park trails. Campers 4 and up may walk to Lincoln Park.

## HOURS AND LATE PICK-UP POLICY

Please drop your camper off between 8:30 – 9:00AM. Half Day pick up by 1:00PM. Full Day pick up by 4:00PM. Because we want to respect the time of our staff, repeated late pick-ups after 10 minutes may result in the removal of the participant from the program with no refund. Aftercare is available until 5:30 for \$20 a day which you will be billed for at the end of the week.

## PROCARE AND COMMUNICATION

If you have never registered with Hazelwood, you will be send camp registration link for new families, there is a \$50.00 one-time, non-refundable registration fee. After we see your registration, you will be sent an invite link to set up payment and complete your ProCare profile. It is important that all parents/guardians download the app because this is how you will sign your camper in and out, communicate with the school during the day, and receive alerts if we need to get ahold of you. If you do not have a smartphone, please let the camp leaders know and they will sign your camper in and out for you.

## PAYMENT AND REFUNDS

Payments will be paid through the ProCare Site on the date listed on your invoice. You may cancel 2 weeks prior to the first day of camp to receive a full camp tuition refund. There is no refund less than 2 weeks since we have already purchased supplies and hired staff. Families who have not paid their fees/tuition will forfeit their spot.

## MEDICAL NEEDS/ALLERGIES



Hazelwood Camp Leaders are not permitted to administer medication unless authorized by both parent and doctor. If you would like to submit medication or notify us of an allergy/food need, please fill out the appropriate sections of the registration form. If a follow up form is needed, you will be emailed them. **Please note, although we do not serve nuts, we are NOT a nut free school.**

## SUNSCREEN



Please apply sunscreen prior to the start of each camp day. Teachers will have extra on hand for reapplying throughout the day.

## MEALS



Hazelwood will be providing an early snack at arrival (and afternoon snack for full day campers) of fruit or veggie, protein, and grain as well as plenty of water throughout the day. Please pack a lunch and labeled water bottle for your child each day. Lunches will be stored inside the classrooms. Please no glass containers, soda, gum, or candy.

## DRESS CODE



Children should dress appropriately for the activities and weather including good footwear for running and playing outdoors. **All shoes must be closed-toed and have a back on them (no slip-ons or flip-flops).** Please no lace up shoes unless they can tie them on their own.

## DIAPERS, WIPES, AND PERSONAL BELONGINGS



Please put your child's name on all articles of clothing, water bottles, bags, etc. If your child is still using diapers/pull-ups, please pack enough plus wipes for your child each day or bring a bag of a week's worth on the first day. Children should not bring toys, electronic devices, jewelry, money, or any possession of value with them to the camp.

## NAP TIME



Full Day campers may opt in for nap time which is between 1 and 3pm. If you are new to Hazelwood, please make sure to select that option on the registration forms and supply a blanket and pillow/comfort item each week. Those items will be kept at school and sent home on Friday.

# BEFORE CAMP CHECK LIST

## **FAMILIES NEW TO HAZELWOOD:**

After you sign-up, look for confirmation email and follow link to register on ProCare and:

- Download app and turn notifications on.
- Create your ProCare profile.
- Complete registration form and fee.  
Look out for invoice email. As long as your payment information has been added, payments will be auto deducted out of your account on the date shown on the invoice.
- Complete medication forms if requested.

## **FAMILIES ALREADY REGISTERED TO HAZELWOOD:**

- Look out for both confirmation and invoice emails.
- Registering a new sibling? You will be sent a link to register them as well.

# DAILY CAMP CHECK LIST

## ARRIVE WITH:

- Pre-applied sunscreen
- Shoes + clothes suitable for being active outdoors.
- (Monday Only) A bag with extra clothes which will be kept at school for the week. Must include extra shirt, shorts/pants, socks, and underwear (if potty trained).
- Lunch and water bottle

## IF NEEDED:

- Hat or sunglasses
- Diapers/pull-ups & wipes for the week
- Pre-approved medications
- If Napping: Monday- Blanket and optional pillow/comfort item. This is kept for the week and sent home each Friday.

**PLEASE LABEL EVERYTHING! THANK YOU!**



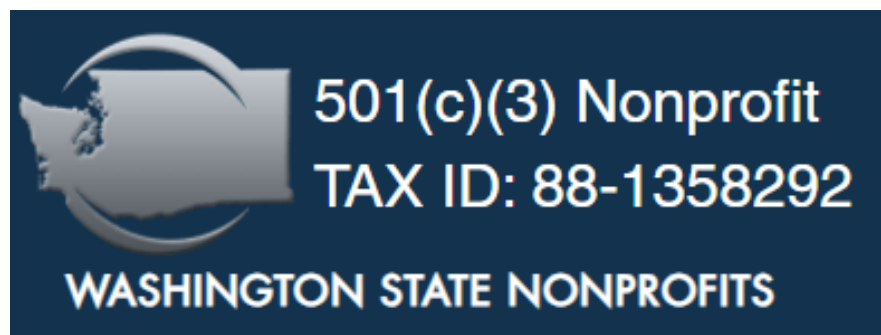
## **Hazelwood Summer Camp**

is a program operated by Hazelwood Preschool.

We are housed in, but not affiliated with,  
Fauntleroy Church UCC.

9140 California Ave SW  
Seattle, WA 98136

**Front Desk:** (206) 790-6748    [admin@hazelwoodseattle.org](mailto:admin@hazelwoodseattle.org)  
**Director:** (253) 670-2995    [jessica@hazelwoodseattle.org](mailto:jessica@hazelwoodseattle.org)



*Hazelwood Preschool adheres to all requirements set forth by the King County Health Department and Washington State licensing requirements.*